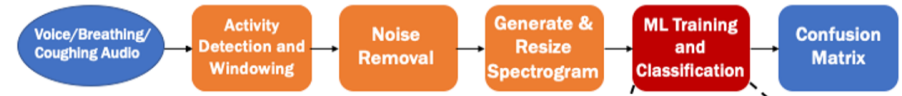


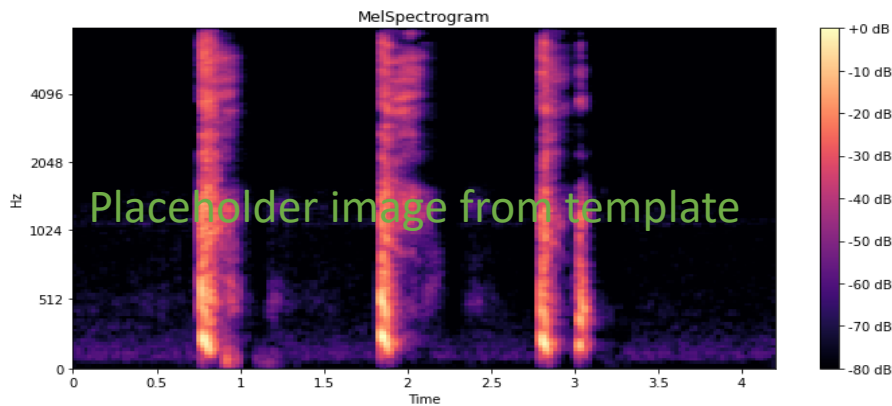
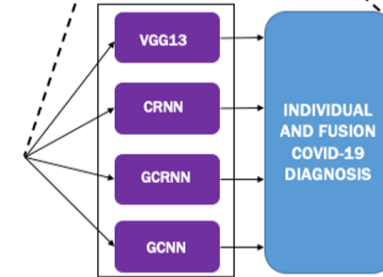
REU Project: Quantum Machine Learning for Audio Classification

David McComas, Glen Uehara, Andreas Spanias
School of ECEE at Arizona State University

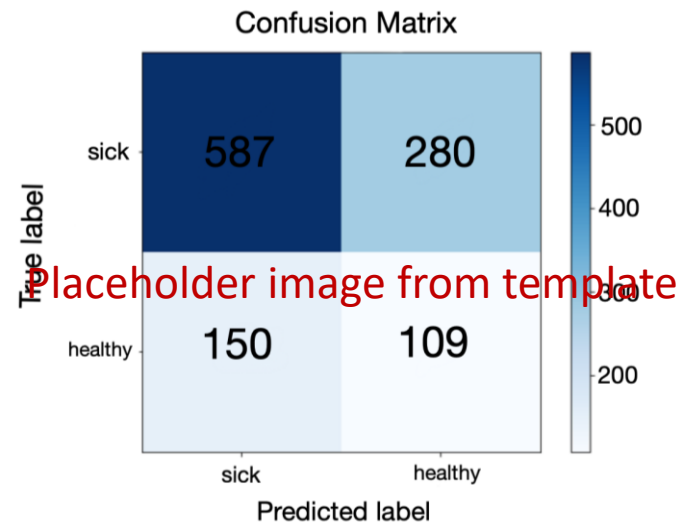
- Obtain data from dysarthric speech databases
- Use spectral estimation and data-specific features
- MATLAB Classification Learner to test different models
- Output diagnosis / confusion matrix
- Qiskit to test Qmodel
- Current accuracy = ?



Placeholder image from template



Spectrogram



accuracy=0.6181; misclass=0.3819

Placeholder image from template