

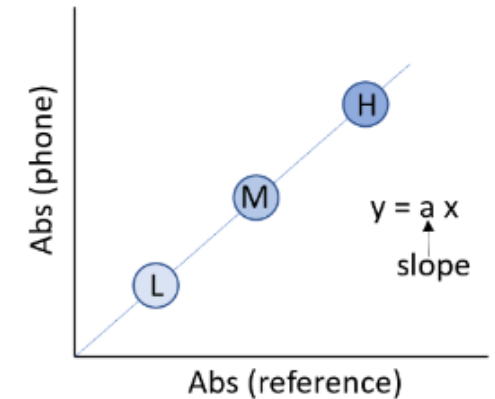
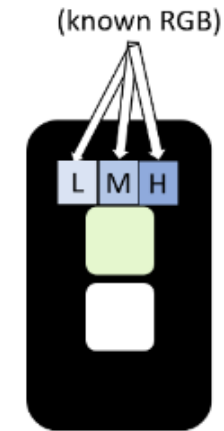
Application Of Machine Learning For Signal Processing To Detect Iron Content On Iron Sensor

Amber Mayers: Senior Biomedical Engineering Major

[1] Arizona State University Ira A. Fulton Schools of Engineering [2] Dublin City University

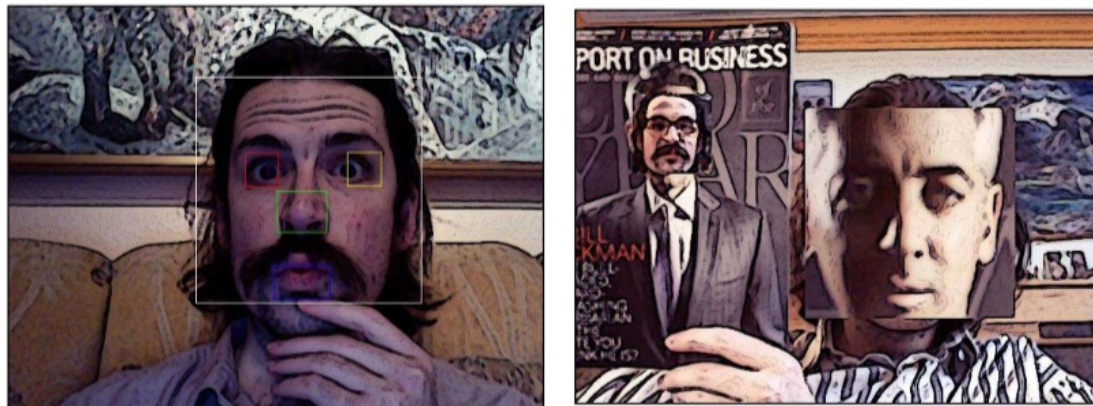
Faculty Members: Dr. Erica Forzani¹ Dr. Margaret McCaul² Dr. Aoife Morrin³

- ❑ Goal: Finding RGB Values On An App In An Uncontrolled Environment
- ❑ Identifying High Iron concentration to prevent illness
- ❑ Recognition Of Specific Regions And Depth To Increase RGB Values



$$\text{Corrected abs} = \frac{\text{Abs}_{\text{phone}}}{a}$$

Region Recognition



ASU ARIZONA STATE UNIVERSITY



Support by NSF Award 2107439